

Scale Drawings

* What is scale factor? _____

In a scale drawing, the scale factor is the ratio of the measurement on the _____ to the measurement of the actual _____.

* The scale on the blueprint says that $\frac{1}{4}'' = 1'$. What does that mean?

* Scale drawings are _____ to the objects they represent.

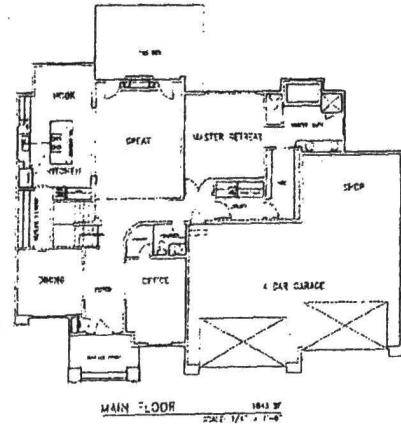
* What are some common examples or uses of scale drawings?

* **Example:** Finding Actual Distances: The scale on a map is 4 in = 1 mi. On the map, the distance between two towns is 20 inches. What is the actual distance? Show all work below.

Work to solve the problem:

Explanation:

$$\frac{4in}{1mi} = \frac{20in}{x}$$



Lesson Review: Try These! ☺

On a map of the Great Lakes area, 2 cm = 45 km. For problem #s 1-4, copy down their distances on the map. Then, determine their actual distances. Show work on the left page of your MSG.

1. Detroit to Cleveland is _____ cm on the map, and _____ km in real life.
2. Duluth to Nipigon is _____ cm on the map, and _____ km in real life.
3. Buffalo to Syracuse is _____ cm on the map, and _____ km in real life.
4. Sault Ste. Marie to Toronto is _____ cm on the map, and _____ km in real life.
5. Distance from Detroit to State Park is _____ km in real life, and _____ cm on the map.

